

## TECHNICAL PARAMETERS Vibration exciter S 57315/LSS-300

Rated peak force Sine <sub>pk</sub> /Random <sub>RMS</sub> <sup>1</sup> /Shock <sub>pk</sub> <sup>2</sup>	15000/11000/37500 N
Frequency range	1 - 2000 Hz
Main resonance frequency	> 1700 Hz
Max. displacement Peak-Peak <sup>3</sup>	100 mm
Max. velocity Sine/Random/Shock	2.0/2.0/4.5 m/s
Max. acceleration Sine/Random/Shock	60/50/210 g
Suspension stiffness	electronically adjustable
Effective moving mass (±5%)	17.0 kg
Max. payload	80 kg
Total mass	1200 kg
Magn. stray field <sup>4</sup>	<6 mT
Armature diameter	300 mm
Interlocks	Field coil temperature, displacement, cooling air, overcurrent

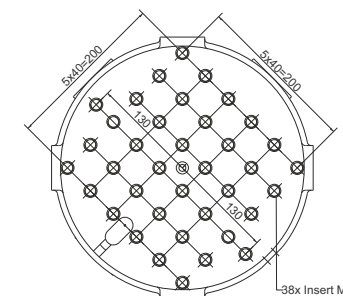
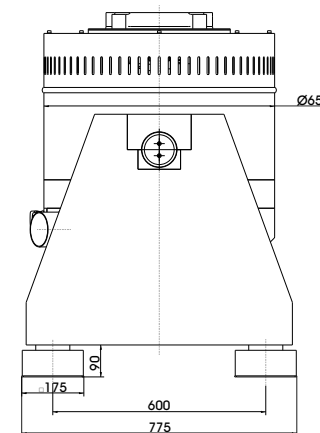
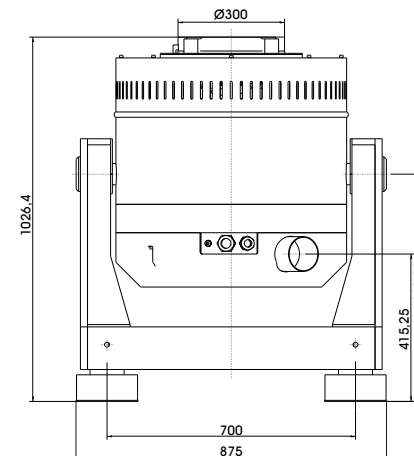
1) Random force according to ISO 5344:2004

2) Theoretical maximum shock value. Depends on payload, amplifier, shock and shock width

3) only with foundation mounting

4) measured at 150 mm above armature

For long-term tests, the load must be reduced to 80 %. Continuous operation at maximum load can cause damage.



Lochbild (Standard)

## SCOPE OF DELIVERY, OPTIONS AND FEATURES OF THE SYSTEM

<p><b>Scope of delivery:</b>          Vibration exciter 15 kN          Trunnion mount          Power amplifier 37.5 kVA          Cooling blower          Connection cables (each 5 m)          Power cables (5 m)          for amplifier (CEE 63 connector)          Blower hose ø140 mm (5 m)</p>	<p><b>Options:</b>          Different thread inserts in the armature at customer request          Wheels&amp;Rails (incl. 3m rails)          Squeak&amp;Rattle (Silent operation without blower)          Thermobarrier          Chamber leadthrough          Climatic chamber support kit          Remote control (Software)          Silencer          for cooling blower (Noise reduction 3 - 6 dB(A))          Acoustic enclosure          for cooling blower (Noise reduction 5 - 23 dB(A))          Cable extension          Factory acceptance test</p>	<p><b>Options:</b>  <b>TIRA EMS</b> Energy Management System          Operation with temperature-controlled cooling blower (and optional with variable field strength)          ASM-Mode (Auto Shutdown Manager)</p> <p><b>Features:</b>          Vibration isolation &lt; 6 Hz          Coarse filter unit          Fully automatic electronic load compensation          Automatic centering of the armature          Degauss kit to reduce stray magnetic field          Made in Germany          Servicehotline</p>
--	--	---

## TECHNICAL PARAMETERS Amplifier A 3 01 11 063 T

Output power <sub>RMS</sub>	37500 VA
Frequency range	DC - 5 kHz
Voltage <sub>RMS</sub> , max.	±212 V
Current <sub>RMS</sub> , max.	300 A
Signal input voltage	10 V
Total Harmonic Distortion (at 70A <sub>RMS</sub> , 200 Hz)	< 0.2 %
Signal to noise ratio	> 80 dB
Field voltage	140 V
Field current	8 A
Total mass	520 kg
Dimensions (WxHxD)	600 x 2200 x 800 mm
Power supply (Standard)	3~ / N / PE 400 V±5% 50 Hz, CEE 63
Recommended fuse protection (Standard)	63 A slow
Max. power consumption at 400 V (incl. blower)	29 kVA
Interlocks:	Overload, Temperature, Displacement, Cooling air, Phase monitoring, Emergency stop

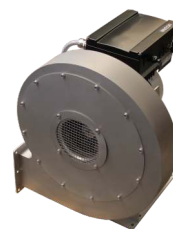
- Features:**
- Field supply integrated
  - Mains switch and integrated line filter
  - Field voltage/Field current variable according to customer spec.
  - 4 Sigma peak current
  - Electronic zero-point-regulation (TMC)
  - Color Touch Screen



## TECHNICAL PARAMETERS Cooling blower TB 120 FUK

Max. volume flow rate	1500 m³/h
Total pressure difference	10.2 kPa
Motor output	5.5 kW
Max. frequency	100 Hz
Hose diameter	140 mm
Hose length (Std.)	5 m
Total mass	61 kg
Dimensions (WxHxD)	487 x 637 x 487 mm
Max. sound pressure level	102 dB(A)
Power supply (standard)	by amplifier rack
Max. current consumption at 400 V	13 A

- Options:**
- Silencer TB 120-SI (Noise reduction 3 - 6 dB(A))
    - Dimensions (LxD): 1100 x 160 mm
    - Mass: 1.2 kg
  - Acoustic enclosure TB 120-AE (Noise reduction 5 - 23 dB(A))
    - Dimensions (WxHxD): 1250 x 1393 x 1470 mm
    - Mass: 103 kg
  - Hose length according to customers request (up to 10 m)



Cooling blower TB 120 FUK



Silencer TB 120-SI (optional)



Acoustic enclosure TB 120-AE (optional)