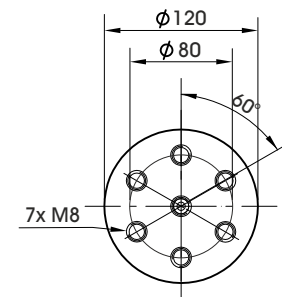
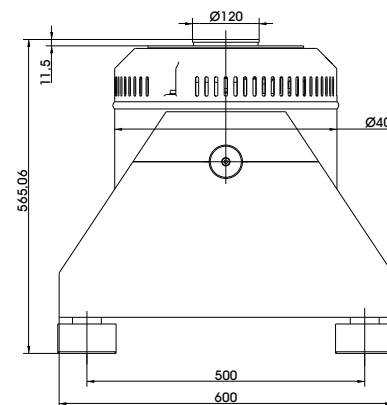
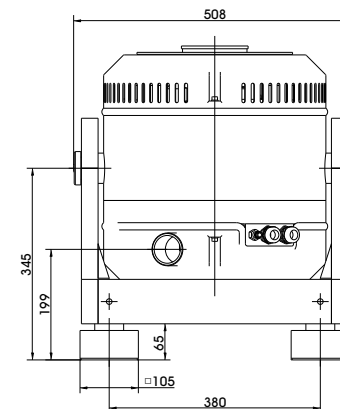


TECHNICAL PARAMETERS Vibration exciter S 50350-120

| | |
|---|--|
| Rated peak force Sine _{pk} /Random _{RMS} ¹ /Shock _{pk} ² | 2700/2000/5500 N |
| Frequency range | 2 - 4500 Hz |
| Main resonance frequency | >3800 Hz |
| Max. displacement Peak-Peak | 25.4 mm |
| Max. velocity Sine/Random/Shock | 1.5/1.5/2.5 m/s |
| Max. acceleration Sine/Random/Shock | 110/70/180 g |
| Suspension stiffness | 22 N/mm |
| Effective moving mass (±5%) | 2.7 kg |
| Max. payload mass | 25 kg |
| Total mass | 280 kg |
| Magn. stray field without/with degaussing ³ | <8.5/<1.4 mT |
| Armature diameter | 120 mm |
| Min. required compressed air supply | 600 kPa |
| Interlocks | Field coil temperature, displacement, cooling air, overcurrent, compressed air |



Armature (Standard)

1) Random force according to ISO 5344:2004
 2) Theoretical maximum shock value. Depends on payload, amplifier, shock and shock width
 3) measured at 150 mm above armature
 For long-term tests, the load must be reduced to 80 %. Continuous operation at maximum load can cause damage.

SCOPE OF DELIVERY, OPTIONS AND FEATURES OF THE SYSTEM

| | | |
|---|---|---|
| <p>Scope of delivery: Vibration exciter 2.7 kN Trunnion mount Power amplifier 15 kVA Cooling blower Connection cable (5 m) Power cable (5 m) for amplifier (CEE 32 connector) Blower hose ø60 mm (5 m) Compressed-air hose NW 7,2 (Standard) (3 m)</p> | <p>Options: Different thread inserts in the armature at customer request Degauss kit to reduce stray magnetic field Squeak&Rattle (Silent operation without blower) Thermobarrier (-40°C to +140°C) Chamber leadthrough Remote control (Software) ASM-Mode (Auto Shutdown Manager) Silencer for cooling blower (Noise reduction up to 6 dB(A)) Acoustic enclosure for cooling blower (Noise reduction 15 - 23 dB(A)) Cable extension Factory acceptance test</p> | <p>Options: TIRA EMS Energy Management System Operation with temperature-controlled cooling blower (and optional with variable field strength)</p> <p>Features: Vibration isolation < 6 Hz Coarse filter unit Fully automatic pneumatic load compensation Automatic centering of the armature Made in Germany Servicehotline</p> |
|---|---|---|

TECHNICAL PARAMETERS Amplifier A 1 02 11 021 SV

| | |
|--|--|
| Max. output power _{RMS} (factory-set) | 15000 VA |
| Frequency range | DC - 5 kHz |
| Voltage _{RMS} , max. | ±212 V |
| Current _{RMS} , max. (factory-set) | 40-100 A |
| Signal input voltage _{RMS} | 10 V |
| Total Harmonic Distortion (at 70A _{RMS} , 200 Hz) | < 0.2 % |
| Signal to noise ratio | > 80 dB |
| Field voltage (factory-set) | 140-280 V |
| Field current (factory-set) | 6-8 A |
| Total mass | 330 kg |
| Dimensions (WxHxD) | 600 x 1740 x 800 mm |
| Power supply (Standard) | 3~ / N / PE 400 V±5% 50 Hz, CEE 32 |
| Recommended fuse protection | 32 A slow |
| Max. power consumption at 400 V (incl. blower) | 17 kVA |
| Interlocks: | Overload, Temperature, Displacement, Cooling air, Compressed air, Phase monitoring, Emergency stop |
| Features: | |
| Field supply integrated | |
| Field voltage/Field current variable according to customer spec. | |
| 4 Sigma peak current | |
| Mains switch and integrated line filter | |
| Color Touch Screen | |

TECHNICAL PARAMETERS Cooling blower TB 0310

| | |
|---|--------------------|
| Volume flow rate | max. 315 m³/h |
| Total pressure difference | max. 290 mbar |
| Power | 4 kW |
| Frequency | 50 Hz |
| Hose diameter | 60 mm |
| Hose length (Std.) | 5 m |
| Total mass | 42 kg |
| Dimensions (WxHxD) | 382 x 384 x 432 mm |
| Sound pressure level, max. | max. 69 dB(A) |
| Power supply (standard) | by amplifier rack |
| Max. current consumption at 400 V | 7.2 A |
| Options: | |
| Silencer TB 0310-SI (Noise reduction up to 6 dB(A)) | |
| Dimensions (LxD): 308 x 82 mm | |
| Mass: 0.58 kg | |
| Acoustic enclosure TB 0310-AE (Noise reduction 15 - 23 dB(A)) | |
| Dimensions (WxHxD): 860 x 760 x 650 mm | |
| Mass: 55 kg | |
| Hose length according to customers request (up to 10 m) | |



Cooling blower TB 0310



Silencer TB 0310-SI (optional)



Acoustic enclosure TB 0310-AE (optional)